



Today's gas pipeline transmission companies are demanding smarter and more complete geospatial solutions to efficiently manage their networks, reduce costs, improve customer service,

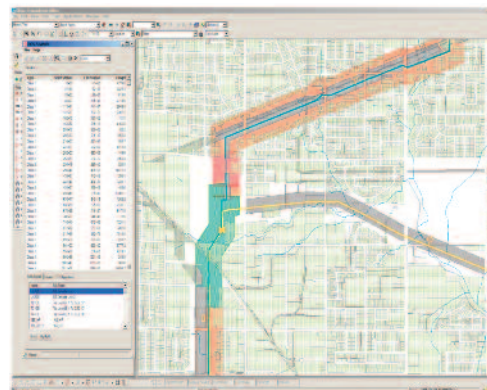
and fulfill increasing compliance requirements. GE Energy's Smallworld Global Transmission Office solution provides transmission companies with the first suite of integrated applications that are fundamental to geospatial management of a full pipeline transmission network. Transmission companies have traditionally created piecemeal solutions by using a geographic information system as the base software, and then adding on multiple applications—either built in-house or by disparate third party vendors. GE Energy's one-source approach further leverages your geospatial investment by reducing these costly integrations, lowering maintenance costs, and minimizing multiple contact points with vendors.

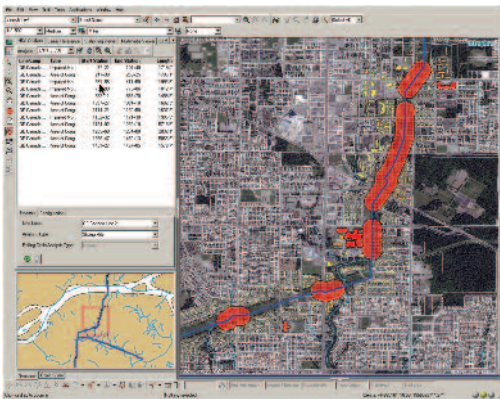
The Smallworld Global Transmission Office solution provides the standard, central applications for engineering, operations, compliance, and asset management for any pipeline transmission system and is built on the proven network technology of GE Energy's Smallworld* Product Suite. The Smallworld Global Transmission Office solution's data model, toolkit and applications lay the foundation for expanded transmission applications, compliance requirements, and integration to complementary products. Coupled with other GE Energy utility solutions, the Smallworld Global Transmission Office solution provides pipeline operators with a complete set of geospatial and business solutions.



Benefits

- The pipeline specific data model can reduce time to "go live" by shortening the database design phase by as much as 80%.
- Return on investment can be realized almost immediately because the built-in applications are immediately useable.
- The standard application code and standard data model does not need to be modified from one revision to the next. Customers are no longer burdened with large upgrade costs.
- Product provides applications and standard methods for pipeline integrity management and compliance reporting.
- Class A product fully supported through the Help Desk.

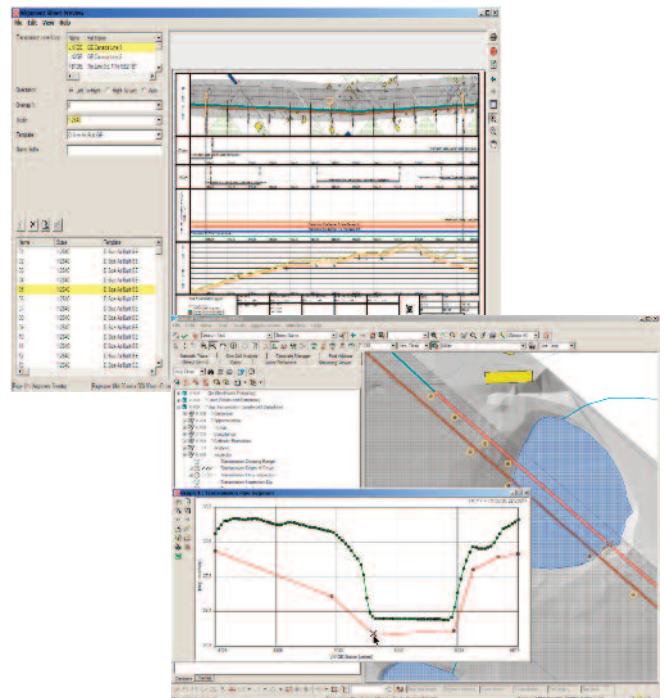




- Ability to integrate with ERP systems
- Productivity Pack to automate common user tasks and improve productivity, including such features as:
 - Object editors and templates
 - Batch update
 - Network integrity toolkit
 - Batch plotting
 - Business rules manager
 - Multimedia viewer
 - Annotation manager

Features

- Standardized pipeline transmission data model that supports any aspect of pipeline asset management with a robust collection of gas and liquid related objects and powerful network modeling capabilities
- High Consequence Area (HCA) Analysis
 - Create HCA and class location areas for natural gas pipelines
 - Create HCA buffers for liquids pipelines
 - Identify sites that meet regulatory requirements as high consequence areas
 - Produce reports based upon segments and HCA types
- Alignment Sheet Generator
 - Analysis object used for displaying pipeline information
 - Visualizes operational, engineering, and integrity data
 - Provides a wizard interface to set the parameters for creating the alignment sheet
 - Quickly generates the sheets and stores boundaries
- Inventory Reporter
 - Quickly build and save queries, and report on facilities in the GIS
 - Annual inventory for property accounting
 - Daily, monthly or annual compliance-related reports



For more information visit www.gedigitalenergy.com

