

MapFrame Mobile Solutions FieldSmart Standard Interface

fact sheet

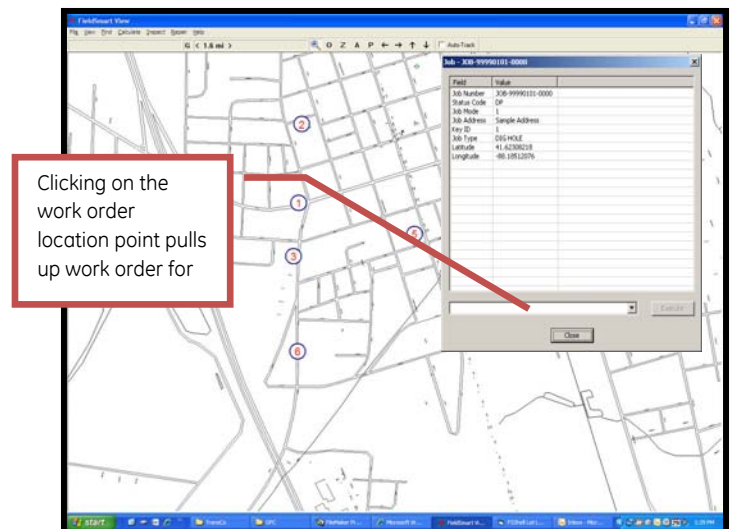
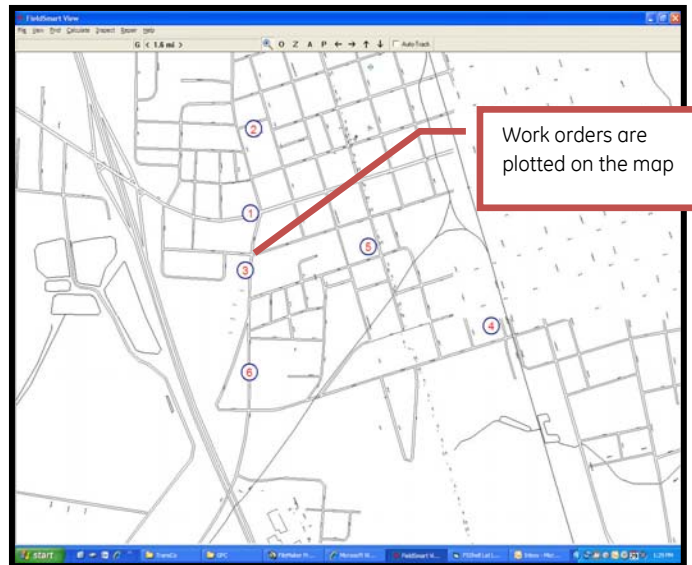
GE Energy's MapFrame™ Mobile Solutions feature a suite of FieldSmart™ applications to automate all field-based work through a map-centric approach. The FieldSmart Standard Interface (FSI)™ product allows seamless interaction between MapFrame solutions and 3rd party applications such as mobile workforce management, ticket locate, and customer built systems. The FSI product enables both applications to run independently yet achieve maximum user benefit through a set of transparent functions. Users can view the 3rd party application integrated directly into FieldSmart View™ software, as well as easily move back and forth between applications.

MapFrame solutions have interfaced to various systems, including KorTerra, SAP, Ventyx, CGI, Logica and Viryanet. Through the FSI product, field users are able to display electronic map data for their work orders, ticket locates, etc., with a simple click of the mouse. MapFrame plots their locations on the map, and a double click on the location pulls up the information from the 3rd party application—allowing users to view and edit the information.

System Requirements

- Runs on any currently supported Windows® -based platform
- Compressed format compatible with existing field and office hardware: pen computer/PDA/laptop/desktop
- Neutral Interface to Data Source Systems:
GIS/CAD/WMS/OMS/Dispatch/CIS/Scheduling/Document Management

The following screen shots demonstrate in a bit more detail how the FSI product works to integrate a 3rd party application within FieldSmart software. In the following examples, a 3rd party mobile workforce management application is shown integrated with FieldSmart software.



For more information visit www.gedigitalenergy.com

